



Comhairle Cathrach Chorcaí
Cork City Council



Cork
Environmental
Forum

Community Climate Action Programme

Travel

Session outline

- Transport challenges globally and locally.
- Opportunities to substitute for more sustainable transport.
- Comparing options by their climate impacts.
- Actions to support your local community reduce travel emissions.



**The main journeys you
make – how and why?**

Travel-related SDGs - global picture

9 INDUSTRY, INNOVATION
AND INFRASTRUCTURE



===== ENHANCING =====
RURAL ROAD CONNECTIVITY
HELPS REDUCE POVERTY



ALMOST 300 MILLION
OUT OF 520 MILLION RURAL DWELLERS
LACK GOOD ACCESS TO ROADS
IN 25 COUNTRIES (2018-2019)

11 SUSTAINABLE CITIES
AND COMMUNITIES



AIR POLLUTION
CAUSED **4.2 MILLION**
PREMATURE DEATHS
IN 2016

ONLY HALF
THE WORLD'S URBAN
POPULATION HAS
CONVENIENT ACCESS
TO PUBLIC TRANSPORT
[2019]



500-1000 METERS
DISTANCE



12 RESPONSIBLE
CONSUMPTION
AND PRODUCTION



RIISING
FOSSIL FUEL SUBSIDIES
ARE CONTRIBUTING TO
THE CLIMATE CRISIS

\$318
BILLION
[2015]

\$427
BILLION
[2018]

Travel-related SDGs



9 INDUSTRY, INNOVATION AND INFRASTRUCTURE

- Road access for rural populations
- Quality, reliable, sustainable and resilient infrastructure



11 SUSTAINABLE CITIES AND COMMUNITIES

- Access to safe, affordable, accessible and sustainable transport



12 RESPONSIBLE CONSUMPTION AND PRODUCTION

- Rationalize inefficient fossil-fuel subsidies

Travel-related SDGs - European picture



The average
concentration of
fine particulate
matter
in 2019 was
12.6 $\mu\text{g}/\text{m}^3$



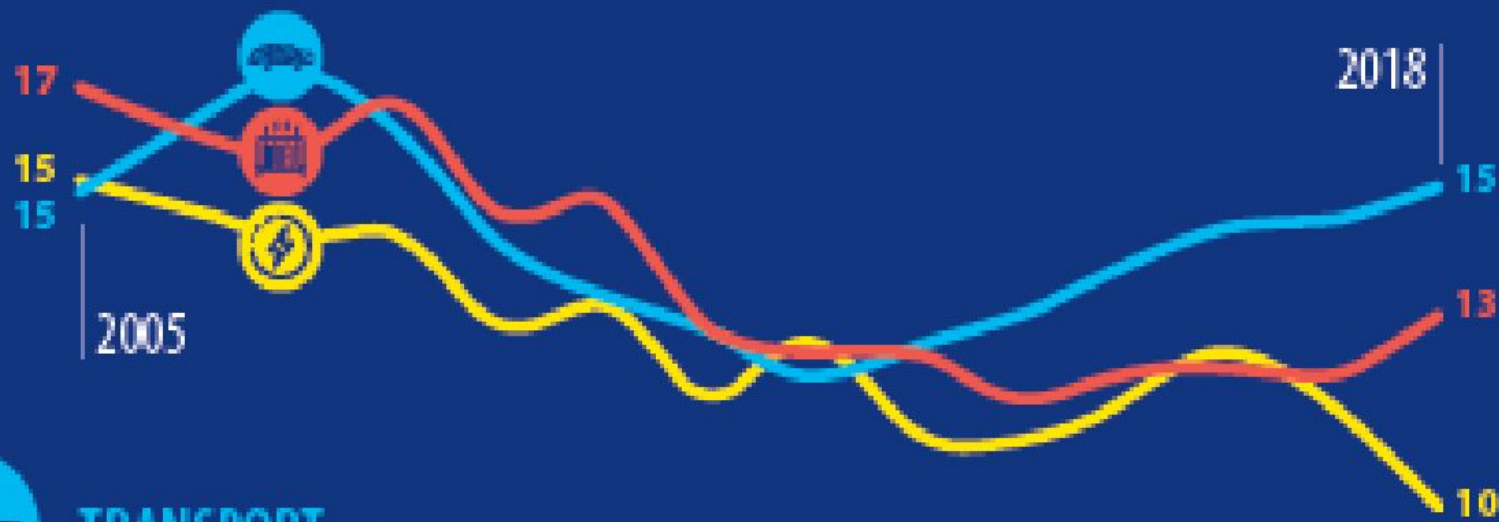
17.1 %
of total inland
passenger-km
were covered by
buses and trains
in 2018



22 757
people were
killed in road
accidents in the
EU in 2019

Ireland energy GHG emissions 2018

Energy related CO₂ emissions (MtCO₂)



TRANSPORT

Emissions

+24% since 2012

Transport remains almost entirely dependent on oil

97%



Biggest contributors to transport emissions in 2018



Mode of travel footprint game

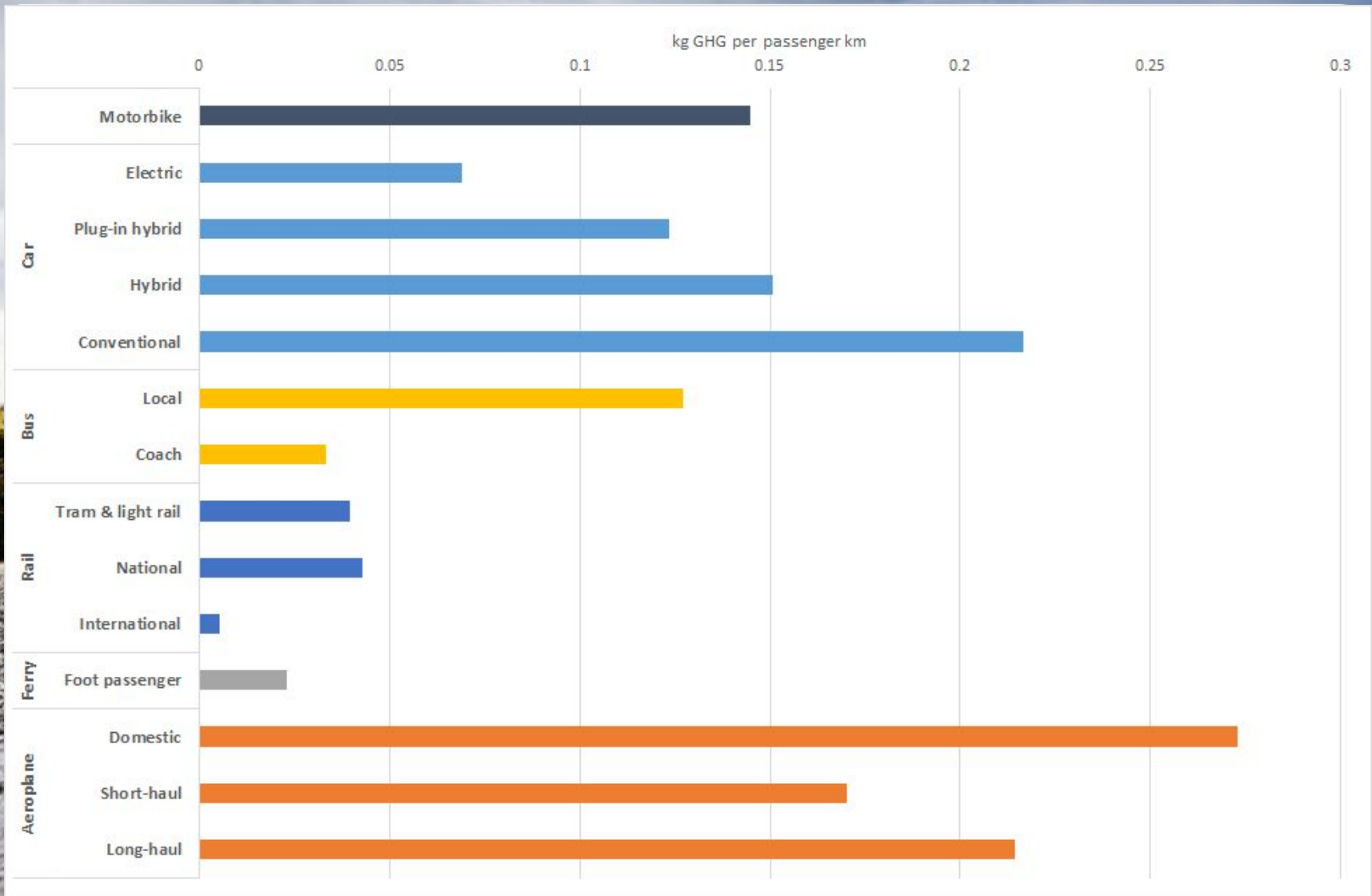
Lowest climate impact
(per passenger km)



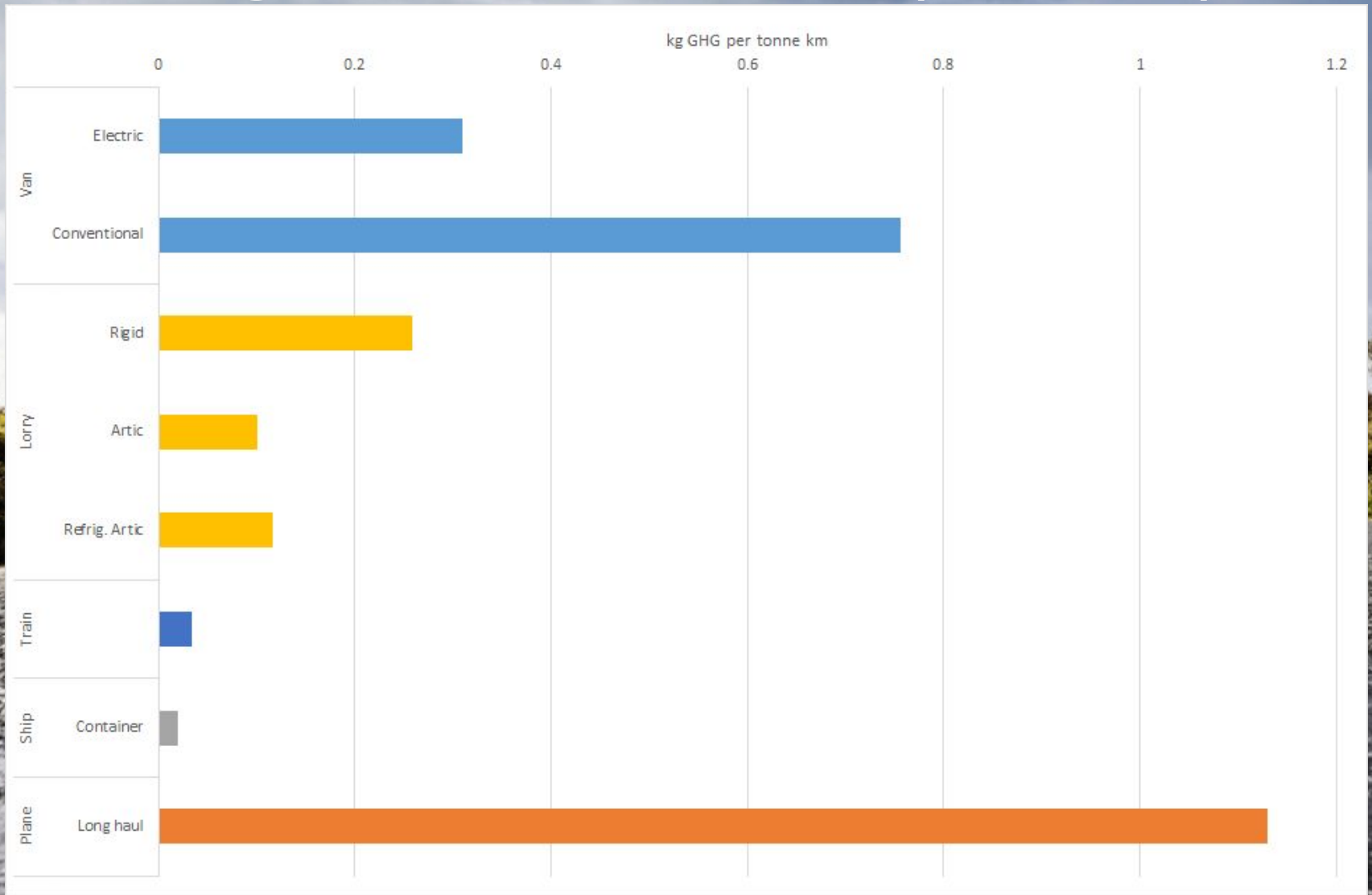
conventional
Highest
impact



Passenger transport options

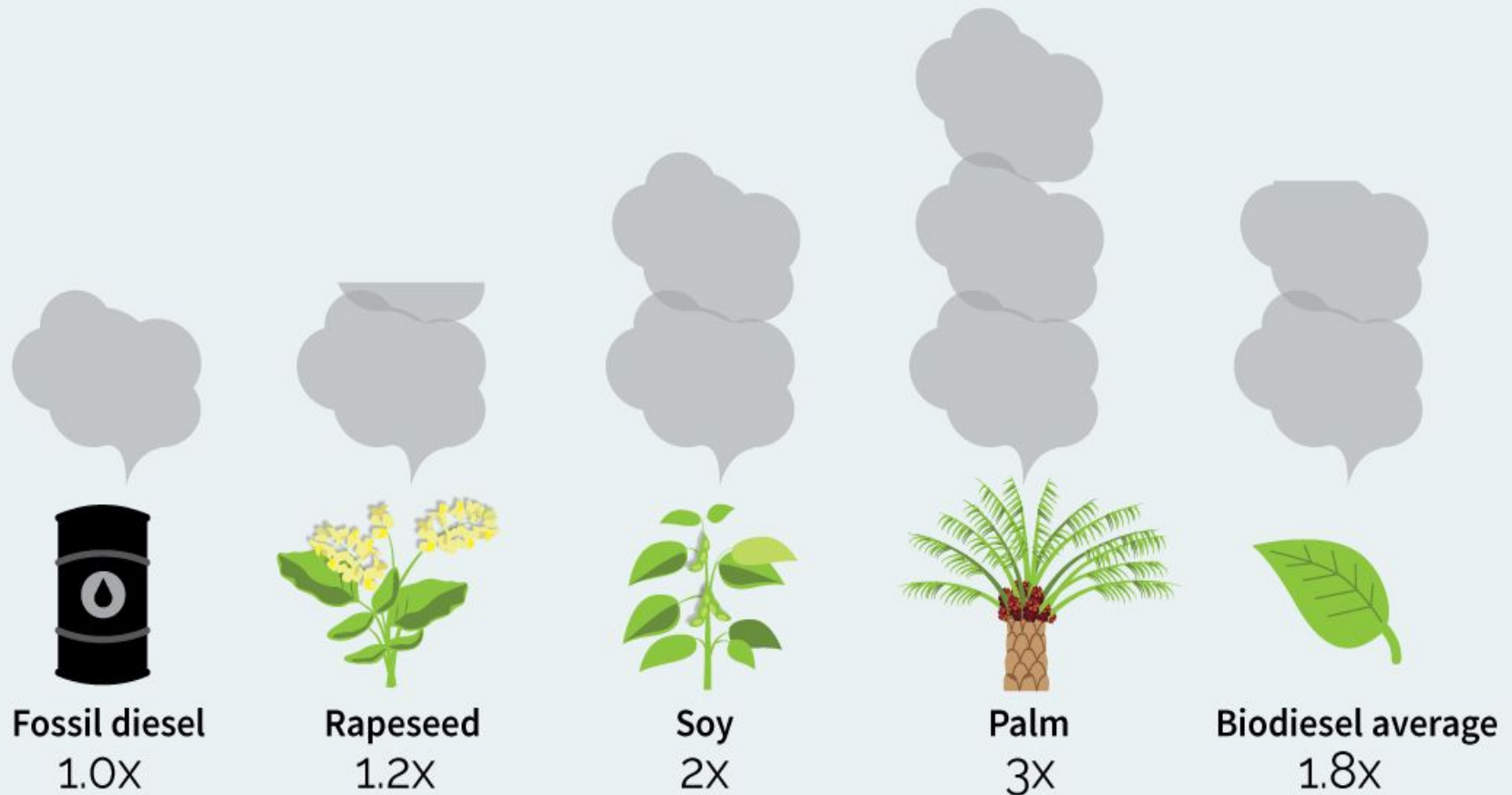


Freight transport options (UK, 2021)



Biodiesel: cure worse than the disease

Fossil diesel emissions vs first-generation biodiesel



Globiom forecasts these biodiesels will account for 57% of the total EU biofuels market in 2020

Source: Lifecycle analysis by Transport & Environment based on Globiom study (2016)

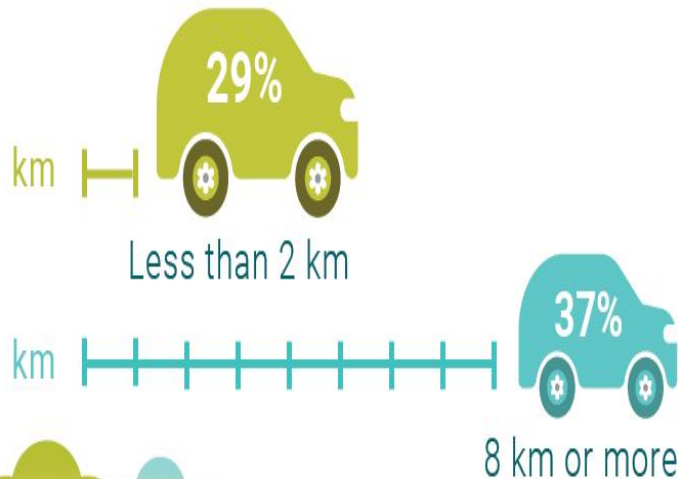
Travel culture in Ireland



National Travel Survey 2019

Persons Aged 18 Years and Over

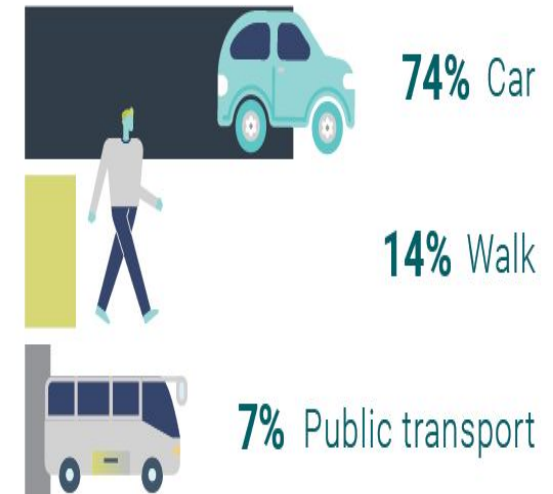
How Far Did We Travel?



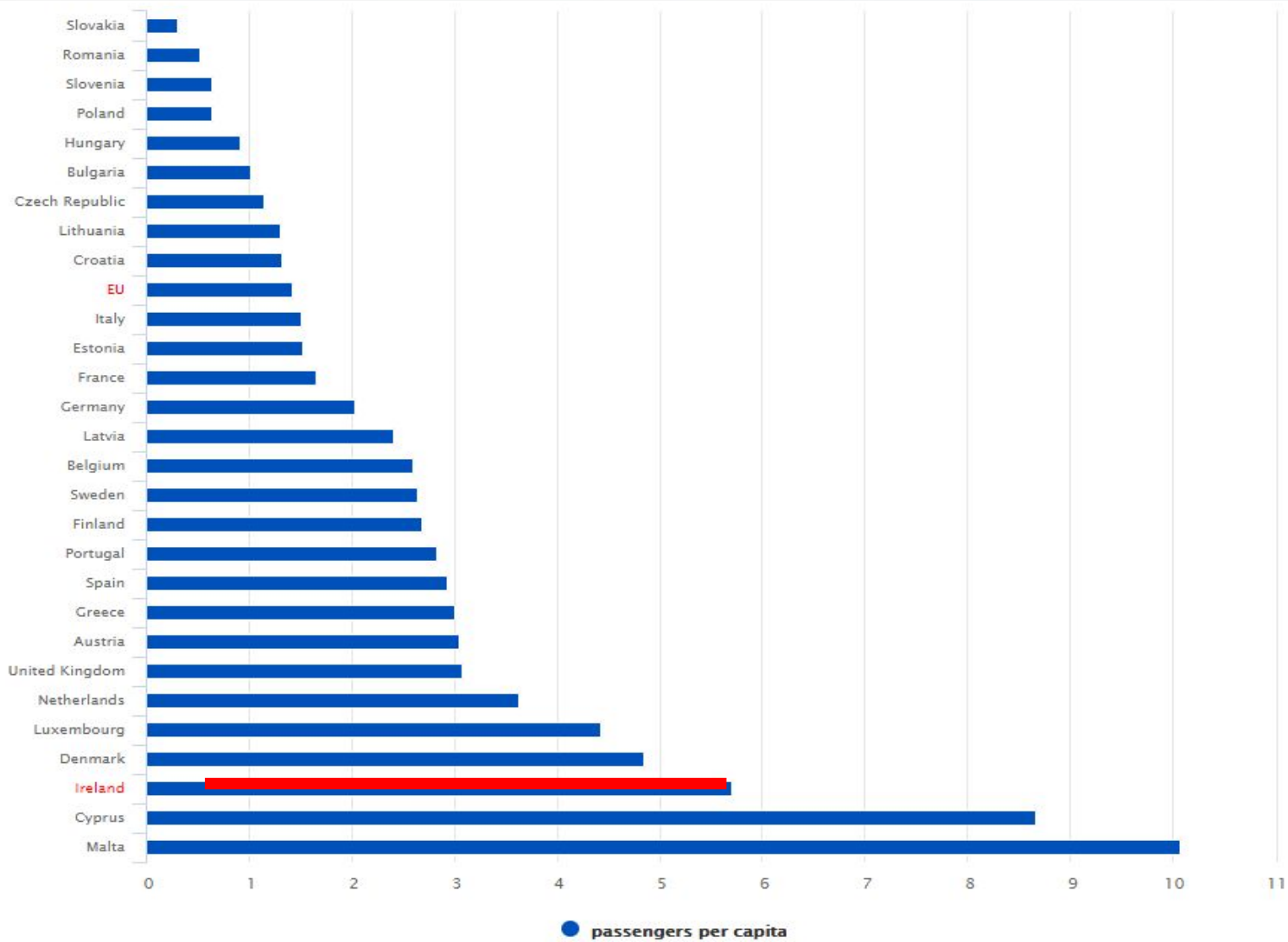
Where Did We Go?



Transport Mode



EU international air travel 2014

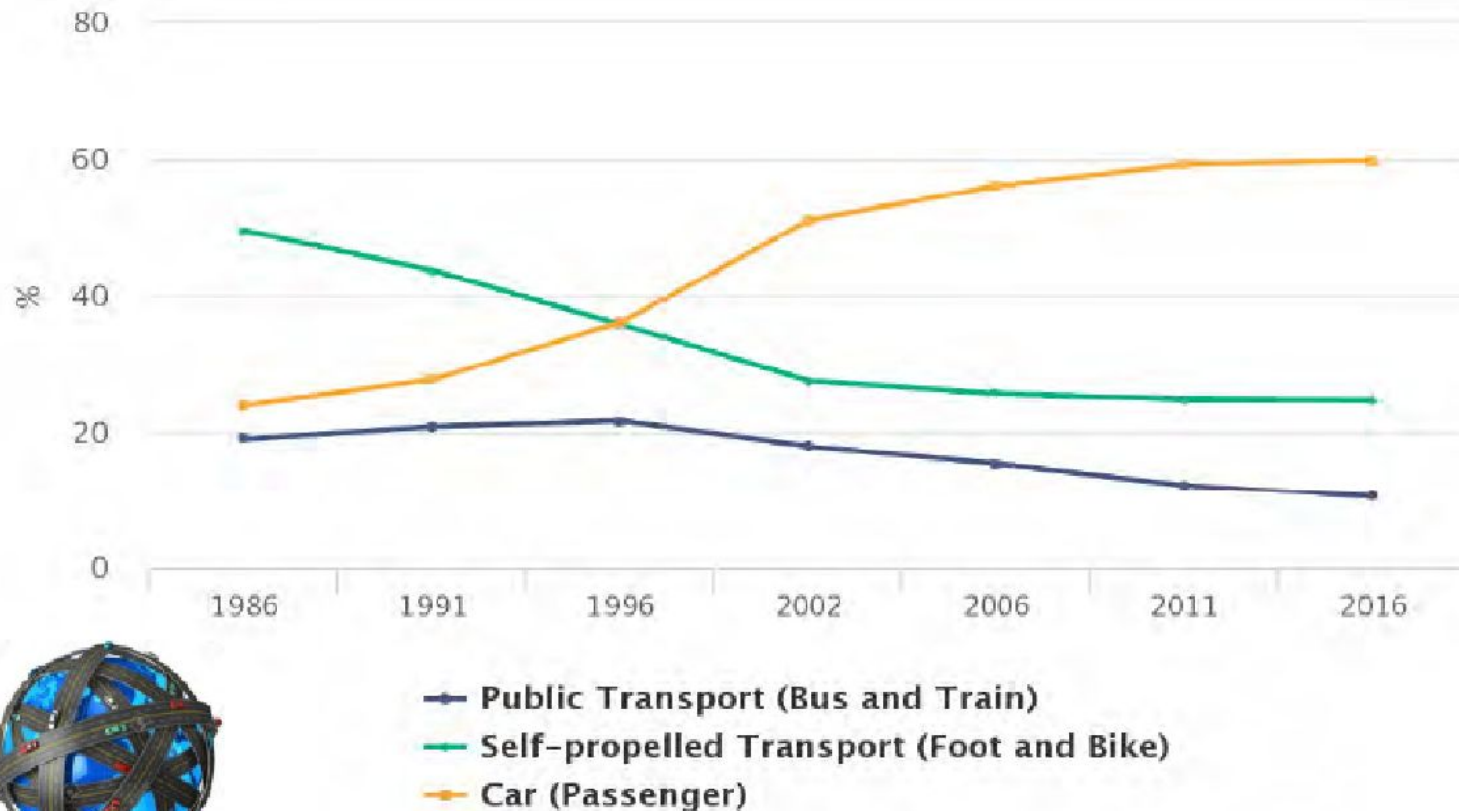


Ireland railway map 1925 vs. 2020



Primary school travel trend

Figure 5.1 Modes of travel for primary students, 1986 - 2016



Source: CSO Ireland

Irish government climate action plan 2019



Transport

Increase the number of EVs by 2030 to circa



1 million

Build EV charging network

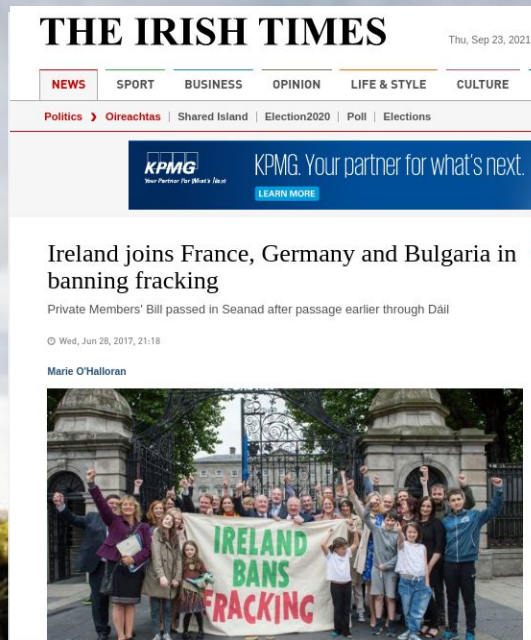
to stay ahead of demand

Expand our network of cycle paths
and 'Park and Ride' facilities,
helping ease congestion

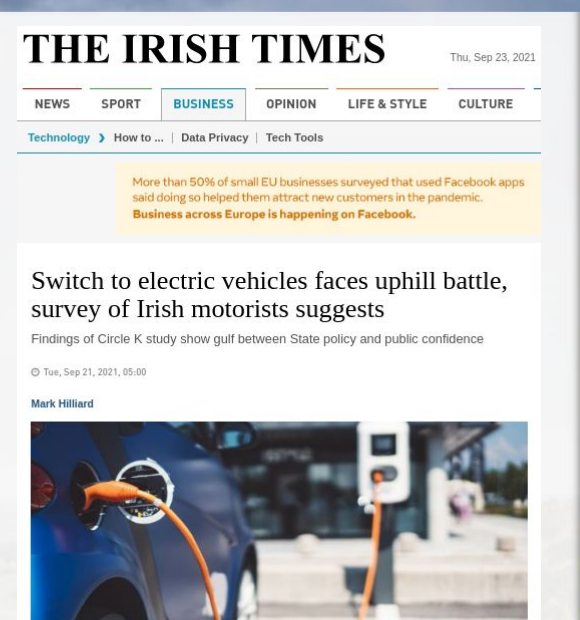
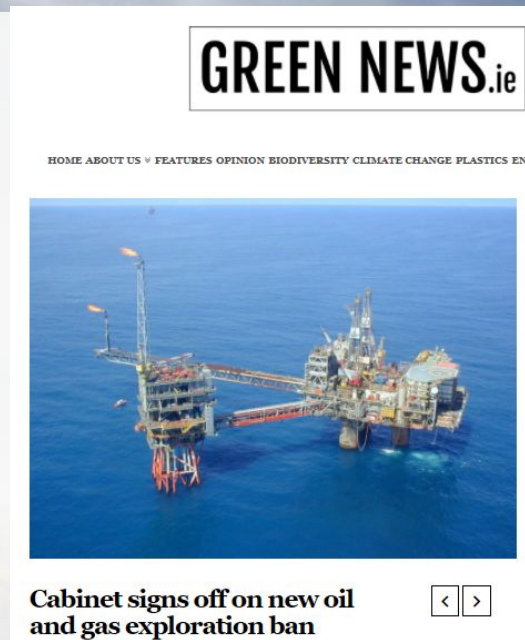
No diesel-only purchases
for public buses in our cities
from 1 July 2019



How are we progressing nationally?



2017



2021

Local options and support



**Cork
Cycling
Campaign**



Pedestrian Cork

A MEMBER OF THE IRISH PEDESTRIAN NETWORK



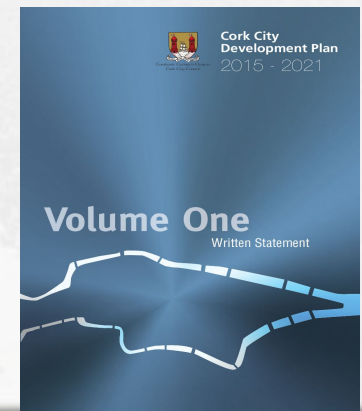
Government plans

National & Regional

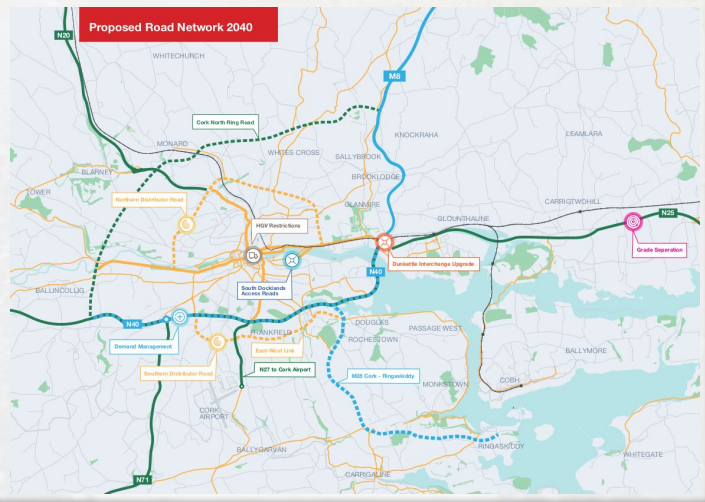
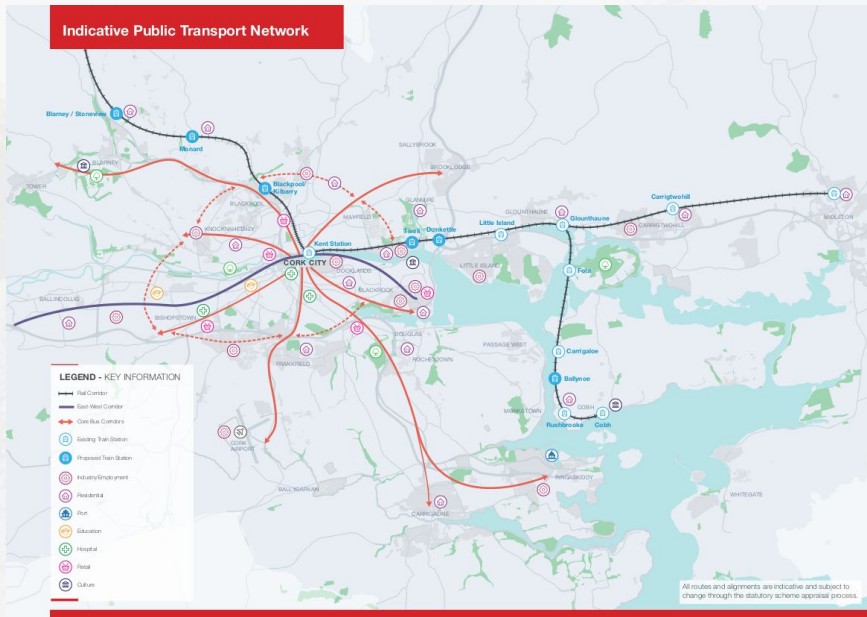
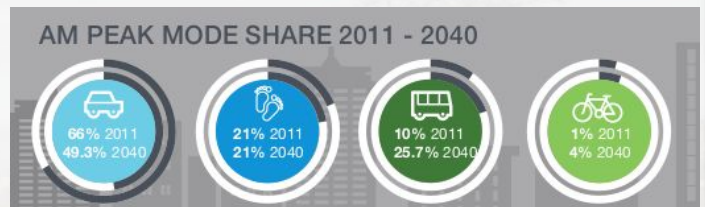
- National Development Plan 2021-2030
- Project Ireland 2040
- National Ports Policy [2019]
- National Cycle Policy Framework [2009-2020]
- Smarter Travel - A Sustainable Transport Future [2009-2020]
- Regional Spatial and Economic Strategy (RSES)

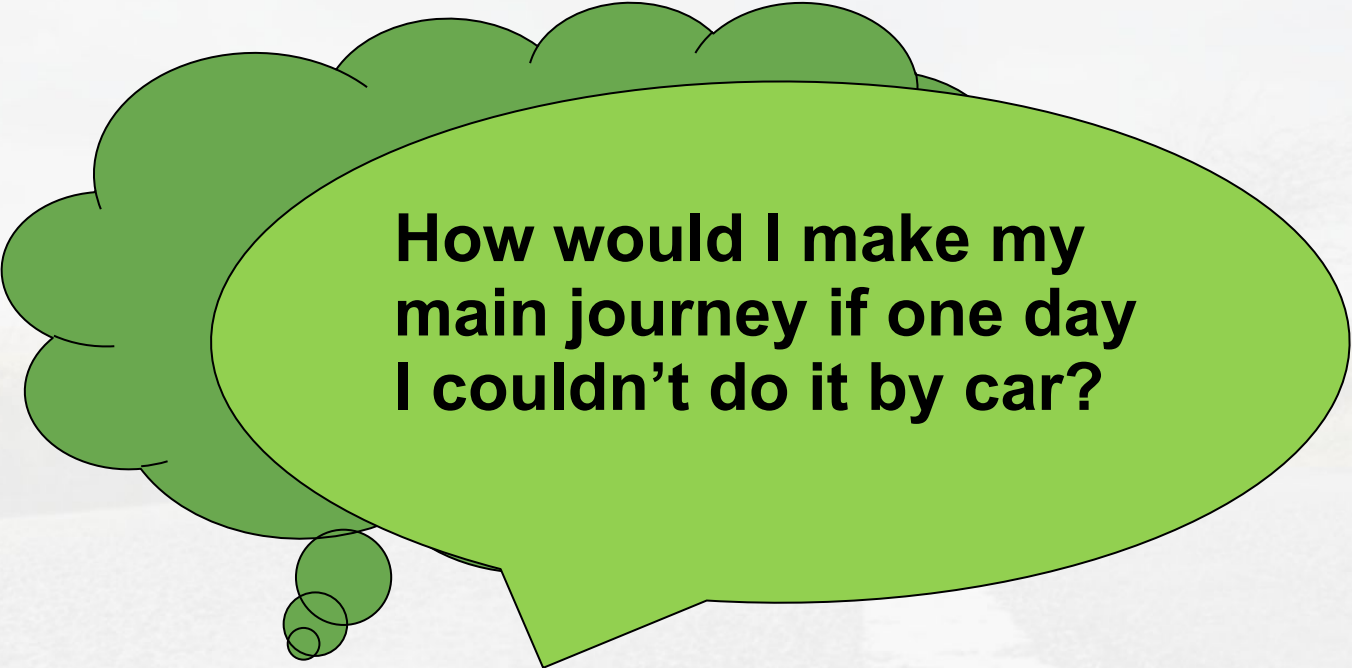
Local

- Cork Metropolitan Area Transport Strategy (CMATS) 2040
- Cork City Development Plan [2015-2021] - replaced 2022-28



Cork Metro Area Transport Strategy Vision





**How would I make my
main journey if one day
I couldn't do it by car?**



**What can we do as
individuals?**

Individual actions

Passengers

- For shorter journeys, walk or cycle
- Fly less
- Substitute car journeys for public transport
- Holiday closer to home
- Carshare
- Getting rid of one car

Freight

- Buy local
- Repair and buy second hand
- Avoid goods that come in by air

Individual actions

Drive more efficiently

- Gentle acceleration
- Brake gently
- Reduce speed
- Steady speed
- Anticipate road ahead
- Lighten the load
- Shift gear earlier
- Inflate tyres correctly
- Less air-con
- Streamline



What actions could our community take?

Community actions

- Connect with travel campaign/support groups
- Make your street nicer place to walk (litter pick / planting)
- Making walkways more accessible
- Community walks/rides
- Street Feast
- Car club / car sharing
- Play streets (road closures)
- Parklets / Parking Day
- Walk/bike buddy offer
- “Bike bus” to school